



DAVIS LAW GROUP News

A Newsletter Published by Davis Law Group, P.S., Seattle, WA
Representing Washington Accident Victims & Families Affected By Wrongful Death



April Issue

In This Issue

Following Through
With Your Medical

Client Spotlight

Chris Davis
Interviewed by
Better Northwest

Scholar Athletes

New Book on
Wrongful Death In
Washington State

Downtown

2101 Fourth Avenue
Suite 630
Seattle, WA 98121
206.727.4000

Eastside

NE 8th Street
Bellevue, WA 98004
(by appointment only)

Renton

S Grady Way
Renton, WA 98055
(by appointment only)

Mercer Island

80th Ave SE
MI, WA 98040
(by appointment only)

For more articles, reports,
studies, videos, news, and
commentary on these and
other legal matters...

DavisLawGroupSeattle.com
206.727.4000

Follow Through With Your Medical Treatment

You've been injured in an accident. The accident was caused by someone else, so you have a claim against that person's insurance company.

The full extent of your injuries may not be obvious immediately after an accident. Some people may feel that they did not sustain a serious injury, only to discover weeks or months later that what they initially thought was a minor injury has worsened and may require significant medical treatment. Because of this possibility, one of the things you should do after an accident is see a doctor for a full evaluation. Depending on the type of injury, it may be best to consult with a specialist. Be certain to tell your doctor about all of your symptoms, no matter how minor they may seem. You should see this doctor as soon as possible

after your accident, so the doctor can properly document the full extent of your injuries. This documentation is important because it creates a clear record of your injuries and treatment, which is essential in a legal claim.

Immediately after the accident, it may be difficult even for the most experienced doctor to tell you how long you will require medical treatment. Depending on your injuries, you may need follow-up care for the first few weeks or months after you leave the hospital. For extremely serious injuries, you may need long-term or even lifelong care. Because it is often difficult to predict your needs early in a case, it is important for you to be vigilant about your health. If you notice a change in your symptoms, you should be certain to tell your doctor about it. You should also, of course, actively participate in your own recovery by following your doc *Continued on Page 2...*

Client Spotlight: Johnny Knowlin

On July 20, 2007 Johnny Nowlin was driving a fuel tanker truck on State Route 6 just west of the South Fork Chehalis River Bridge in Washington state.

At the same time a logging truck that was pulling a trailer was headed in the opposite direction. The logging truck rounded a bend in the road at a high rate of speed. The driver of the logging truck hit the breaks after he saw two large vehicles traveling across the South Fork Chehalis River Bridge and then lost control of the trailer he was pulling behind the logging truck. The trailer jackknifed and entered into the oncoming lane. The logging trailer struck the Johnny's fuel tanker head-on causing a serious accident, with another truck that was following Johnny rear-ending him as well. A massive amount of damage was inflicted on all of the vehicles involved.



As a result of the collision Johnny Nowlin suffered serious injuries to his left hand, abdomen and left knee. He was transported to a nearby hospital and then evacuated to Harborview Medical Center in Seattle. Johnny had emergency surgery on his left hand to treat a crushing injury and several fractures. He also required a skin graft on his hand using skin from his left thigh. He later underwent a second surgery on his left hand to deal with mobility issues to his left pinkie finger. This procedure involved opening up the first web space with a W-plasty or Z-plasty procedure. *Continued on Page 2...*



Following Through: Medical Treatment

Continued from Page 1... tor's orders, taking your medications and undergoing whatever rehabilitation or treatment your doctor recommends.

Your lawyer will also need to know about changes in your condition and how they affect your life, so he or she can explain the full extent of your injuries and damages to the insurance company and ask for the fairest settlement of your claim. To help your lawyer, you should keep a written record of your medical treatment and how your life has been affected by your injuries. This will also help you refresh your memory later, in case your claim goes to trial months or years after the accident.

When your treatment is completed or your doctor feels you have reached maximum medical improvement, your lawyer may request additional medical records, to better understand how the injuries will affect you in the future. Sometimes your lawyer may want to consult with a separate specialist hired for the sole purpose of reviewing your records and giving opinions about your injuries in trial if necessary. This may occur if there are problems proving your injuries, or serious questions about the extent of your injuries and future prognosis.



In any event, the lesson to be learned by all personal injury accident victims is to diligently follow through with your treatment. Follow your doctors' orders and recommendations. Everything you do or don't do during your treatment will be scrutinized by the other party's insurance company or a defense lawyer if the case goes into litigation. ■



"The logging truck's trailer jackknifed and entered into my lane." -Johnny

Continued from Page 1... In total Johnny missed almost four months of work following his two surgeries. He received 9 months of physical therapy. He has permanent loss of sensation, limited motion and has post-traumatic arthritis

in his left hand.

After an initially unsatisfactory experience with a small-town law firm Johnny switched lawyers and hired Seattle personal injury attorney Chris Davis to provide legal assistance in recovering financial compensation for this medical bills, lost wages, future medical needs, loss of use of his hand and pain and suffering. Davis successfully negotiated a \$350,000 settlement. "My wife and I were like 'wow, this is the way it should be....it was unreal the difference between him and the other attorney that we worked with. The insurance company was stubborn...but in the end, thanks to Chris, we got a great result!" ■



Better

NORTHWEST

KIRO TV's Penny LeGate recently visited our office to interview attorney Chris Davis for "Better TV". 'Better' is a nationally syndicated lifestyle show that brings fresh perspectives to the world of relationships, fashion, entertainment, finance, health and family life to viewers each day. Penny and a film crew were interviewing Chris for a future segment featuring his work as an author.

kirotv.com



DAVIS LAW GROUP



SCHOLAR ATHLETE OF THE WEEK



Molly Boyd

Nathan Hale High School - 2/8/2010

Molly Boyd has been athletic throughout her life and decided as a young girl that she wanted to play at a high level of soccer. She was a freshman varsity starter at Nathan Hale HS, leading the team with the most goals and earning a Metro League 1st team position. "It is often in negative moments we find the most positive attributes in ourselves. Stricken by an ACL tear in the heart of her college recruitment and further delayed by complications related to the injury, a side of Molly burst out that sets her aside from simply a player who can walk on to

the highest level of youth soccer the state has to offer." Says UW Women's Soccer Assistant Coach, Jim Thomas.



Warren Sadler

Wilson High School - 2/18/2010

Warren has now lettered in 3 varsity sports while maintaining a GPA over 3.9 and taking mostly Honors or AP level classes. This year he was on the Knowledge Bowl Team and has now received three 4.0 semesters in a row. Also this year, Warren was elected to Senior Class Representative and is very involved in the Wilson High School ASB. He continues to do community service, including tutoring other students through his involvement in the National Honor Society. He is also involved in community service and youth activities at his church in Tacoma. "Warren is a very polite and nice young man with a big heart,

a great sense of humor and he truly possesses great leadership ability," Says his father, Bruce Sadler, "He has great potential for the future."

Know an outstanding high school senior student athlete?

ScholarAthleteProgram.com

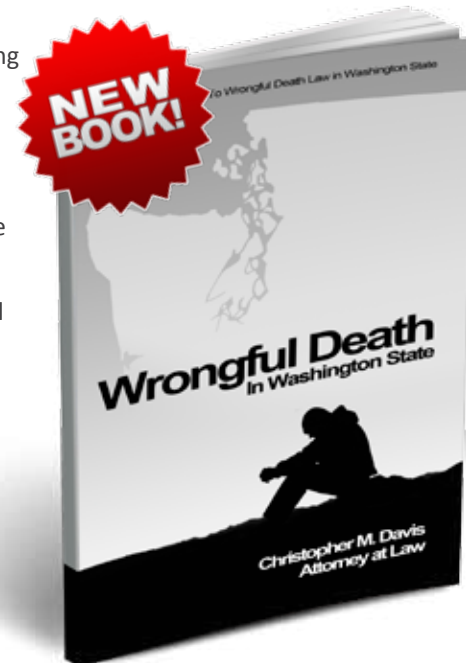
NOMINATE THEM!

Wrongful Death In Washington State: The Essential Guide To Wrongful Death Law in WA State

No amount of money will ever make up for the loss of a loved one but our civil justice system recognizes that a wrongful death can impose severe emotional and financial consequences on the surviving family members and that monetary compensation may be the only way to achieve justice. **Wrongful Death in Washington State: The Essential Guide To Wrongful Death Law in Washington State** will help families understand and navigate the legal process when a loved one has been killed due to negligence. The book sensitively addresses common issues and questions that may arise after the death of a loved one. It offers an overview of the wrongful death laws and the litigation process; explains the need to start a probate action; offers suggestions on how to deal with medical and funeral bills; describes how to make sure that the surviving children and family members are fairly compensated; and outlines the necessary legal steps involved in a wrongful death lawsuit.

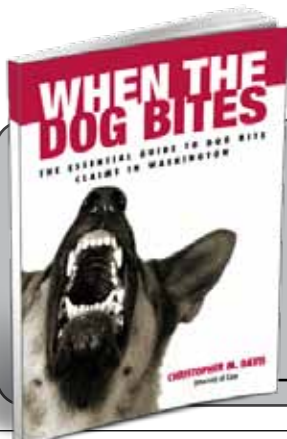
Read this book to:

- Understand what you need to know about wrongful death lawsuits.
- Gain valuable insight into the legal process.
- Learn how to begin a wrongful death claim.
- Determine if you actually need a wrongful death attorney.
- And much, much, more...



Get Your Free Book At:

www.DavisLawGroupSeattle.com



When The Dog Bites

In *When The Dog Bites: The Essential Guide To Dog Bite Claims In Washington* Davis explores the legal rights of dog bite victims; outlines the legal and settlement process for dog bite claims; gives tips on dealing with insurance companies; answers common questions asked by dog owners and bite victims; and address legal issues that are often present in animal attack cases. Davis also shares both national and local facts and figures for various dog breeds and types of dog bite cases.

➔ www.WashingtonDogBiteBook.com





DAVIS LAW GROUP, P.S.

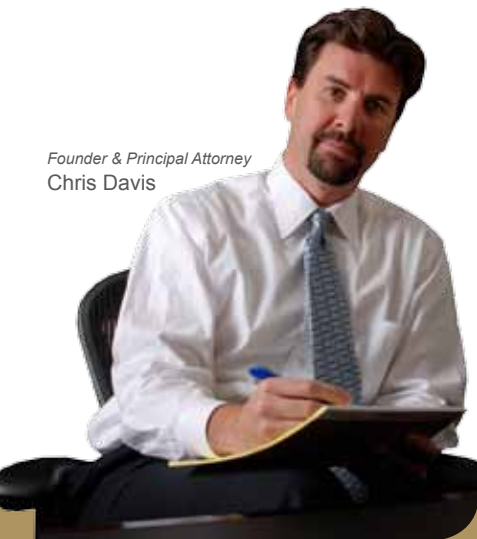
2101 Fourth Avenue
Suite 630
Seattle, WA 98121

PRSR STD
US POSTAGE
PAID
MAIL WORKS II

206.727.4000

www.DavisLawGroupSeattle.com

Founder & Principal Attorney
Chris Davis



Find us on
Facebook!



[Facebook.com/SeattleInjuryLawyer](https://www.facebook.com/SeattleInjuryLawyer)
[Facebook.com/SeattleCarAccidentAttorney](https://www.facebook.com/SeattleCarAccidentAttorney)

Formula To Calculate Compensation For Car Accident Damages



There is no way to systematically calculate the exact value of an accident case, but there are a list of 8 things that are taken into consideration when determining the amount of compensation an accident victim should receive. The types of damages an insurance company will typically pay for after a car accident include the following:

Medical Expenses: This includes medical expenses incurred to treat an injury, such as doctor's visits; hospital expenses; emergency room expenses; fees for chiropractic care; physical therapy; and any type of medical devices that may be needed for your recovery.

Future Medical Expenses: These are recoverable if the injured party can show that he or she is likely to need continued medical care as a result of the accident or injury.

Pain and Suffering: Pain and suffering damages may be granted for physical pain resulting from an accident or injury.

Mental Anguish: Recovery for any type of mental or emotional distress suffered as a result of an accident or injury.

Lost Wages: You may recover the amount of money you would have earned between the time of the injury to the time of a judgment or settlement had you not been injured.

Loss of Earning Capacity: You may recover damages for lost earning capacity if you can show that your ability to earn money in the future has been impaired.

Loss of Consortium: This relates to the loss of the benefits of married life when one spouse is injured. The uninjured spouse makes the claim and only has a chance of recovering if the injured spouse succeeds in recovering damages.

Property Damage: Recovery for the value of property that was damaged. ■

